

Marble Maze Recycled Art

Not all art creations are just for looking at! In this project you will make a functional marble maze that incorporates recycled objects into a fun game! Follow these steps to combine basic engineering with an artistic flair into something amazing!



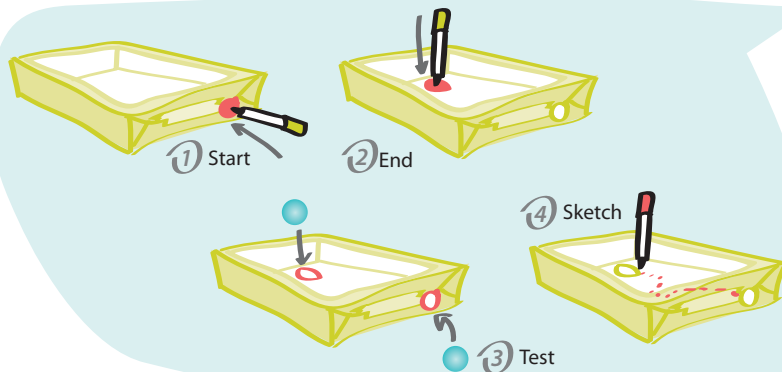
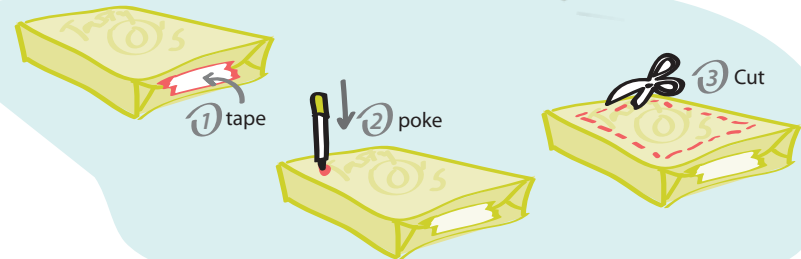
Materials

Cereal Box
Marble
Recycled Materials
Tape
Scissors
Crayons
Pencil or Pen
Gluestick
Poster Putty
Paper Scraps

1 Make the Box Frame

- 1 Tape the ends of the box shut.
- 2 Poke a hole using a pencil in one corner.
- 3 Cut all along the edge of the box.

Be sure to save the extra cardboard.



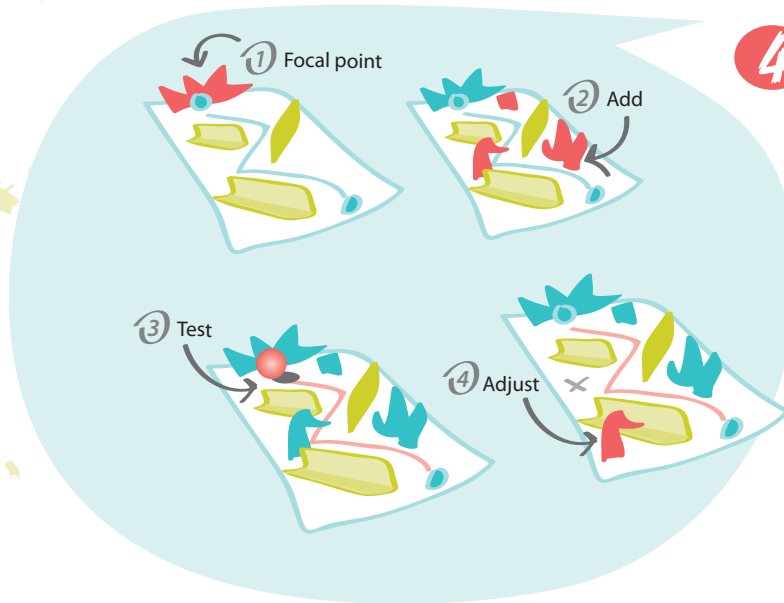
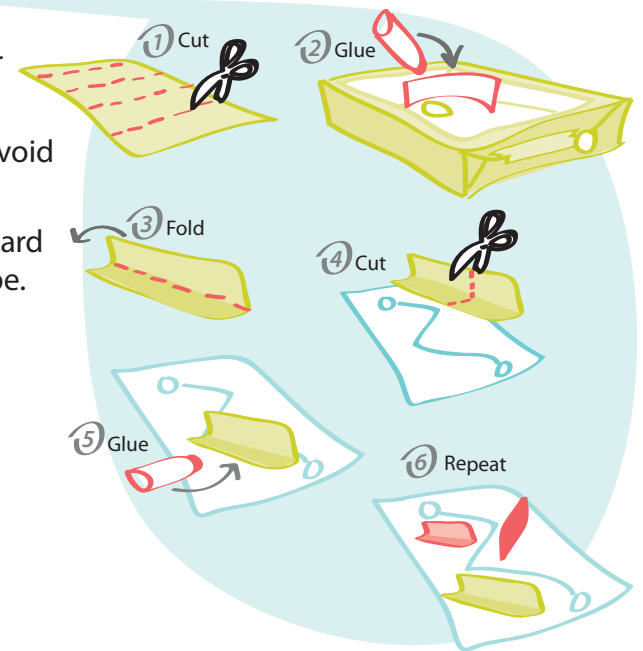
2 Design

- 1 Mark where you want to start the maze and poke a hole through side of the box using a pencil.
- 2 Create another hole on opposite end of box for exit.
- 3 Test both holes using the marble to make sure they are big enough. Use scissors to widen the opening if needed.
- 4 Sketch a rough path of where you want the marble to go.



3 Construct

- ① Use the cardboard that was set aside earlier to cut strips 2" wide.
- ② Glue strips into the corners of the box to avoid the marble getting stuck.
- ③ Make walls for the path by folding a cardboard strip in half lengthwise to make an "L" shape.
- ④ Cut to fit the size of the line needed for your design.
- ⑤ Add glue or tape to one edge and press into place.
- ⑥ Repeat for all the lines you have drawn.

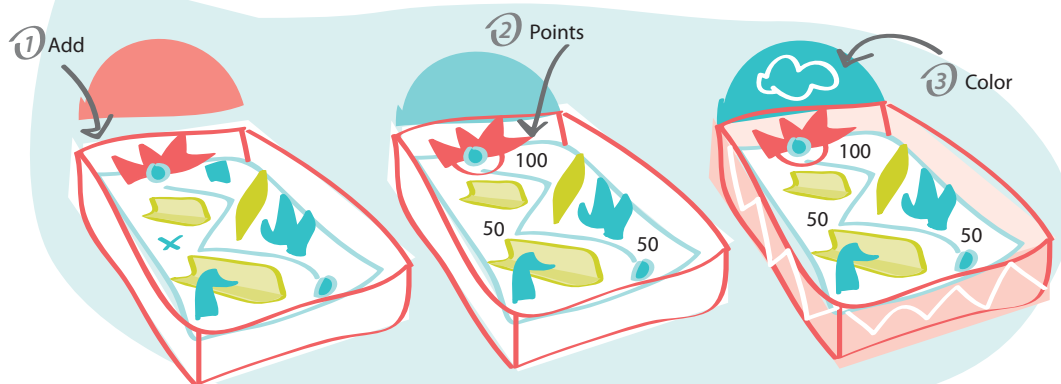


4 Add Obstacles & Targets

- ① Create a focal point at the end of your maze by adding a small object. Use poster putty or tape to make it stay in place.
- ② Repeat this process to add all of your favorite objects to create obstacles & targets for the marble.
- ③ Test with the marble to make sure it goes where you want it to.
- ④ Adjust the obstacles and walls as needed.

5 Decorate

- 1 Add cut paper or stickers to areas you want to decorate.
- 2 Give points to each target and the exit of the maze.
- 3 Use crayons to give more interest.



6 Play!!

Have fun seeing how many points you can get as your marble travels through the game you have made!



Watch the how-to video!

Get more Collage tips and info at:
www.groundworkarts.com/p23-Marble-Maze



Share

Upload a picture of your art to
www.groundworkarts.com/share